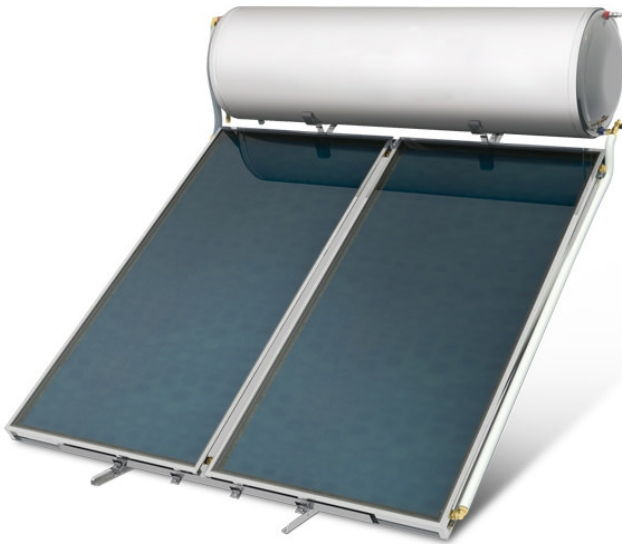


# ENERSOLAR

natural circulation solar system



THERMOSTAHL ENERSOLAR is a natural circulation system for hot water production from solar energy.

The solar collectors have selective surface for maximum absorbance and are covered with high strength tempered glass.

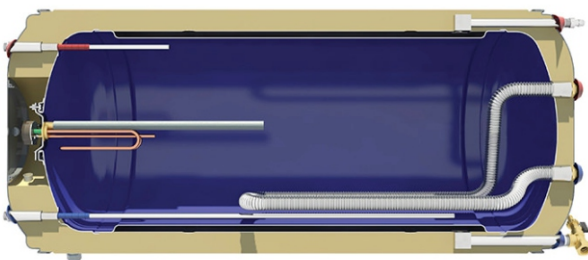
The water tank has an internal glass coating and external insulation of injected polyurathane for minimum heat losses.

The system is very easy to instal and ensures safe and efficient function. It is also equipped with electrical resistance with safety thermostat and anode protection. Optionally, it can be equipped with serpentine heat exchanger for connection with the central heating boiler.

The system comes together with metal support for easy installation on flat or inclined roof.

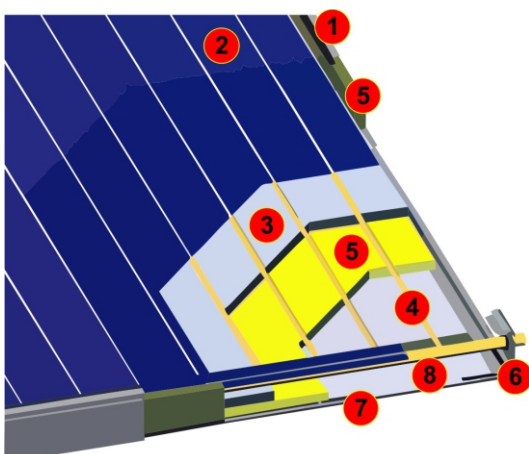


## WATER TANK



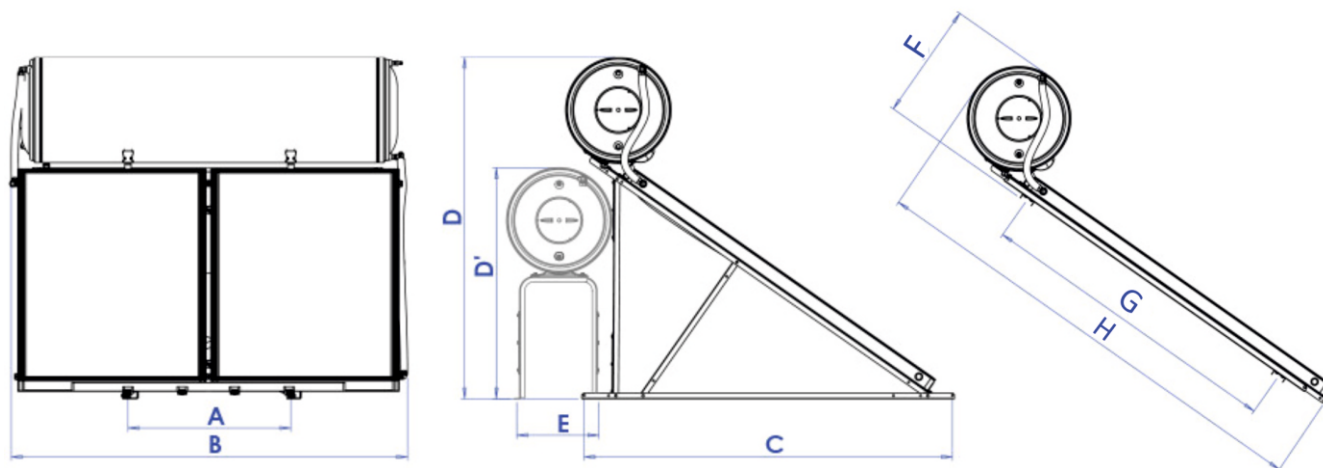
- Made of cold rolled steel 2,5mm thickness
- Glass internal coating
- Thermal external insulation from expanded polyurethane
- External protection with electrostatically painted steel
- Anode protection
- Big round flange for easy cleaning
- Electrical resistance 4 kW with bipolar safety thermostat
- INOX serpentine heat exchanger for connection with boiler

## SOLAR COLLECTOR



- Selective surface solar
- Collector made completely of aluminium
- Water piping made of copper Ø22 and Ø10
- Solar radiation absorbance  $\alpha=95\%$  ( $\pm 2\%$ ) - reflection factor  $\epsilon=5\%$  ( $\pm 2\%$ )
- Strong thermal insulation of compressed rockwool 50 mm thickness,  $\lambda=0,032 \text{ W/m}^2\text{K}$
- High quality tempered glass for maximum solar captivity and strength
- Sealing with EPDM rubber with UV protection

## TECHNICAL CHARACTERISTICS



Type		SLE 120/2	SLE 160/2.6	SLE 160/3	SLE 200/3	SLE 200/4
Water tank volume	lit	120	160	160	200	200
Nr. of solar collectors		1	1	2	2	2
Collector dimensions	m	1,00x2,00	1,28x2,00	1,00x1,50	1,00x1,50	1,00x2,00
Absorbing surface	m <sup>2</sup>	2,0	2,6	3,0	3,0	4,0
Indicative nr. of users		1-2	2-3	2-4	3-5	3-5
Installation angle		35-45°				
Electrical resistance	kW/V	4 / 230				
Hot water connections	inch	1/2"	1/2"	1/2"	1/2"	1/2"
Heat exchanger connections	inch	3/4"	3/4"	3/4"	3/4"	3/4"
Hot water working pressure	bar	10	10	10	10	10
Serpentine working pressure	bar	3,5	3,5	3,5	3,5	3,5
Serpentine surface	m <sup>2</sup>	0,62	0,91	0,91	1,28	1,28
Serpentine volume	lit	8,6	12,9	12,9	18,3	18,3
Dimensions	A	mm	70	90	90	90
	B	mm	112	140	219	219
	C	mm	203	203	153	153
	D	mm	189	189	160	160
	E	mm	45	45	45	45
	D'	mm	128	128	128	128
	F	mm	65	65	65	65
	G	mm	172	172	131	131
	H	mm	261	261	211	211